

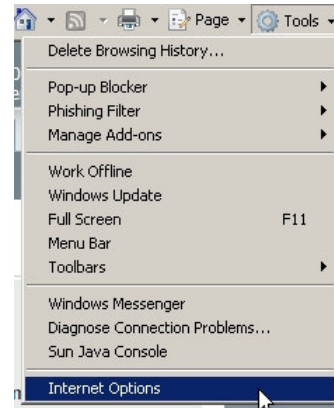
Using the Internet at Home with your Cable Network.

If you want to use the **Internet at home**, you can, but you have to **change some settings** inside of Internet Explorer. If you have wireless access at home or you are hanging out at Small Dog having a latte....

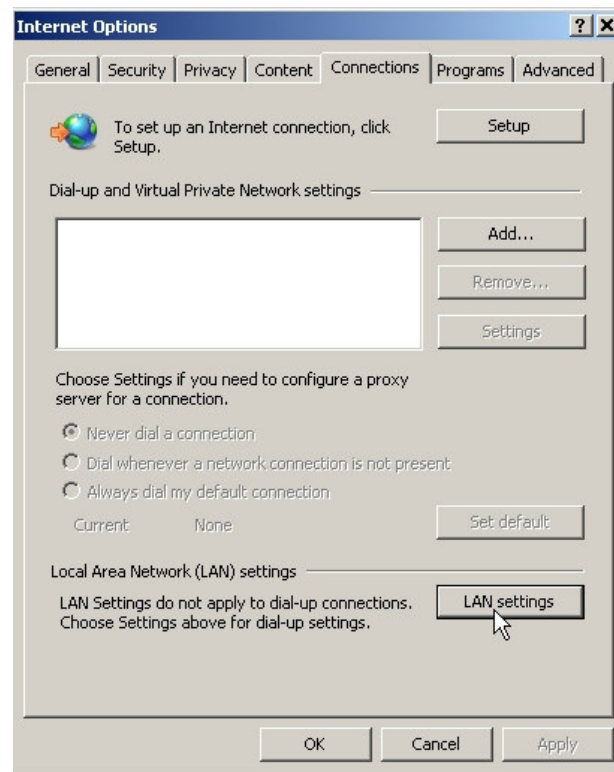
Or you want to plug into your network using the white cable in the bag....

Do this:

1. Open Internet Explorer.
2. In the far right hand corner of the screen click on **Tools** and then **Internet Options**.

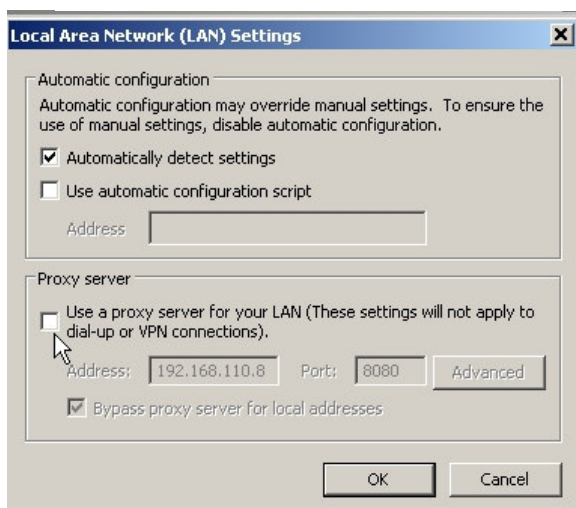
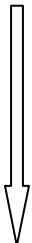


3. Click on the tab that says **Connections** and then click on **LAN settings**.



4. Click in the box underneath Proxy server so that there is no check mark in the box. Then click okay in this window and also in the window before it. Now you should be able to go online.

Be sure to go back and click inside that box when you are done so it will work back in school.



These directions are based on having cable access. If you have dial up access, the set up will be different....